

GFS-400 GEN2

SOLAR STREET LIGHT



60W / 75W / 100W

11,220lm / 14,025lm / 18,700lm

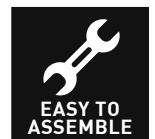


The GFS-400 offers an off-grid lighting solution where traditional lighting is too costly or impractical to install. It is consistently chosen by councils and Local Government across the globe for its reliability and performance.

It provides an entirely independent lighting solution for roadways, car parks, intersections and perimeter security where high illumination lighting is required without the energy supply charges or costs associated with trenching, cabling and power grid connection.

APPLICATIONS

- Streets
- Roadways
- Intersections
- Car Parks
- Industrial
- Commercial
- Parks
- Recreation



MODEL**GFS-400****OPERATING PROFILE / OPERATION MODE**

Standard 60W	Constant all night operation - Unit operates at 60W (11,220lm) until dawn
Standard 75W	75W for 6 hours - Unit operates at 75W (14,02lm) then dims to 20W (3,740lm) until dawn
Standard 100W	100W for 4 hours - Unit operates at 100W (18,700lm) then dims to 20W (3,740lm) until dawn

NOTE: Configurable TIMER settings for ON / OFF / DIM are available upon request

Power	60W -100W
Lumens	11,220lm - 18,700lm
CCT	4000K
LED	CREE X-PG Adjustable angle
Lens	LEDIL T3 type. IK-10 rated
Optics	T3 135° x 85°
Solar Panel	454W(p) mono-crystalline 21% efficiency, impact resistant tempered glass, bird guard, stone guard on under side

Pole	Octagonal high strength steel, Hot dipped galvanised with zinc coating (AS4680 Standards)
LED Outrigger	1.2m - 3m / 4'-10'
LED Mounting Height	5.4m / 17.7' - 8.8m / 28.8'(optional)
Sail Area / EPA (m ² / ft ²)	Solar panel : 1.1m ² / 11.84' ² Outrigger: 0.095m ² / 1.02' ² LED Fixture: 0.085m ² / 0.91' ²

Battery	2 x 12v 110Ah (2640Wh) Sealed GEL Batteries
Charge Controller	MPPT type with temperature and short circuit protection. Programmable custom settings
Operating Temp.	-20°C to 60°C / -4°F to 140°F

Certifications	AS/NZS 1158 V Category Roadway, ISO9001:2015 Quality assured company, RPEQ Certified Design
----------------	---

Warranty	5 year / 25 year solar panel / 5 year battery*
----------	--

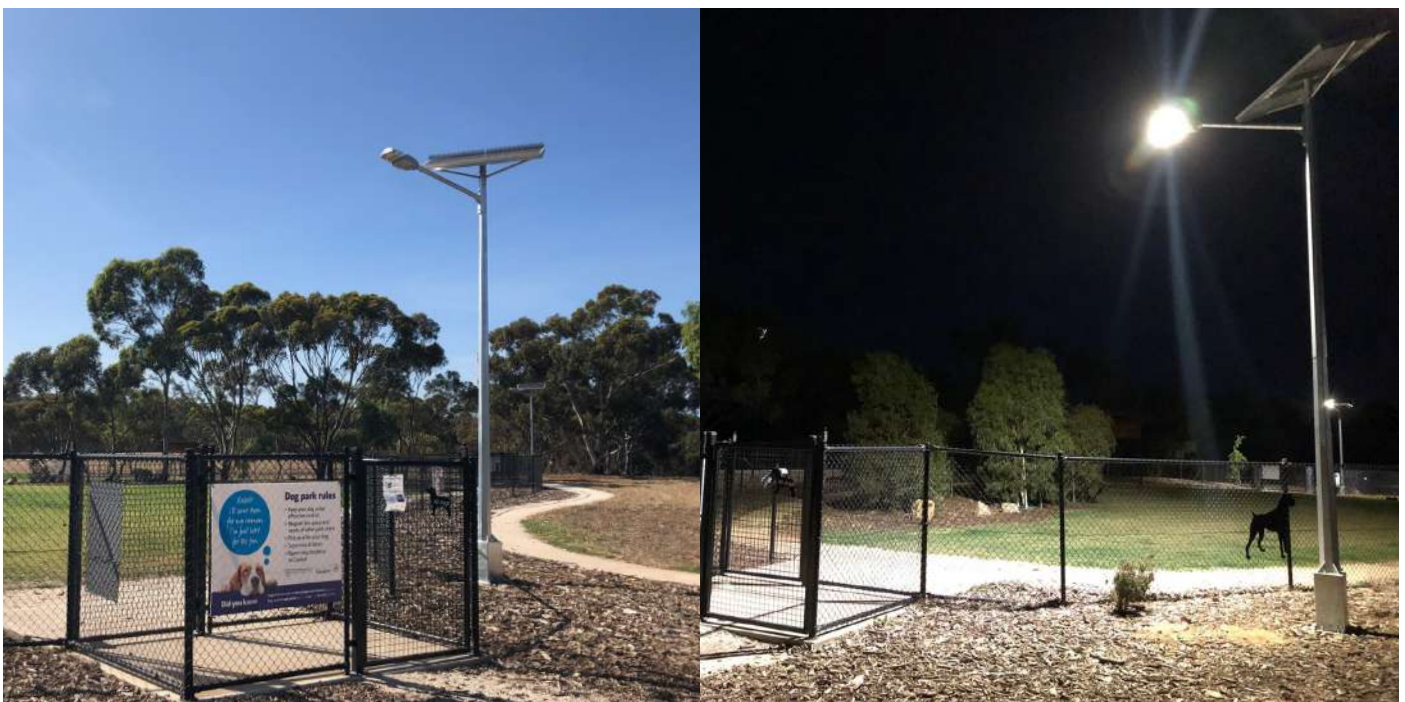
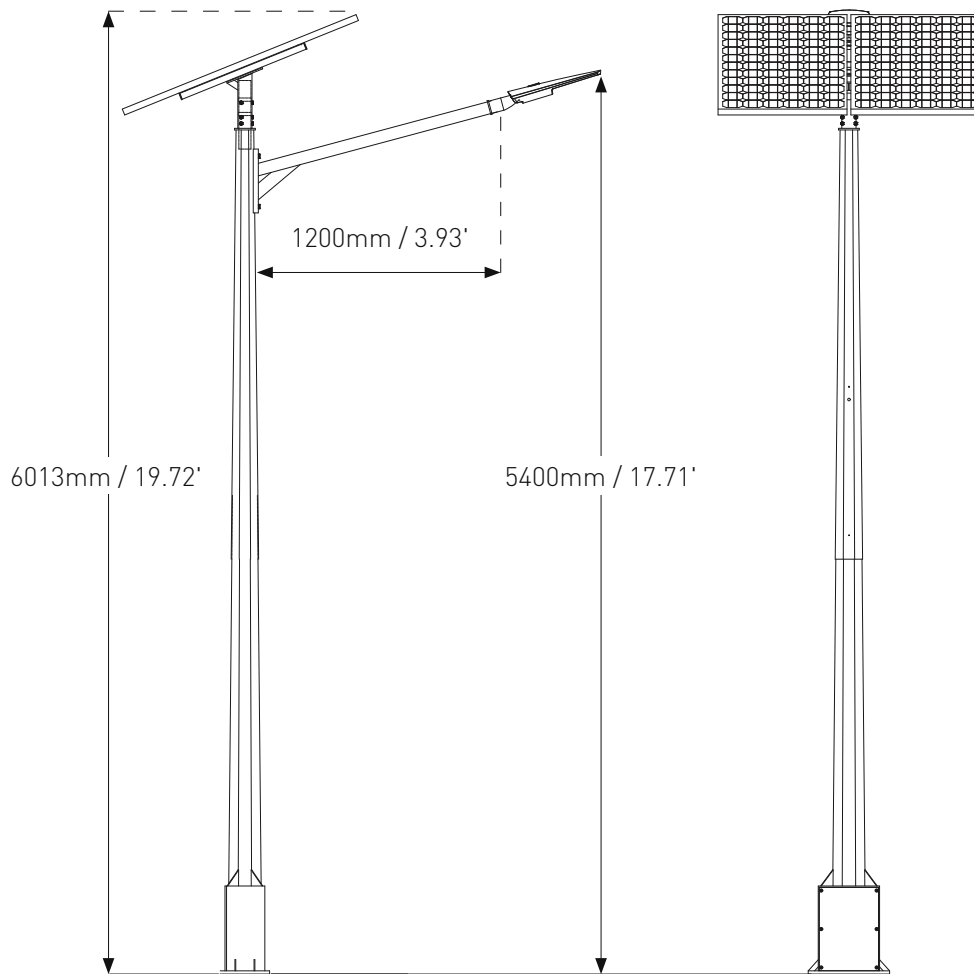
Package Dimensions (Standard 6m pole)	Crate: 1650 x 880 x 560 mm / 65" x 35" x 22" Top pole: 3000 x 130 x 130 mm / 118.1" x 5.1" x 5.1" Bottom pole: 3000 x 510 x 310 mm / 118.1" x 20" x 12.2"
--	---

Package Weight (Standard 6m pole)	Crate: 189 kg / 372.5 lb Top pole: 27 kg / 59 lb Bottom pole: 83 kg / 183 lb
--------------------------------------	--

Options	<ul style="list-style-type: none"> • 9.5m / 31' Galvanised pole with external battery box • Concrete block for temporary / mobile lighting • 75W (14,025lm) / 100W (18,700lm) • Twin LED at 180° / 90° • IoT SMART city monitoring and control system (SAM) • Anti-climbing spike collar • Light spill shield front / back • Outdoor rated ON / OFF switch • 3000K CCT • T5 Lens 110° x 135° • Goose neck outrigger extension • Cyclone wind region C / D
---------	---

*Full warranty details are available at:
<https://greenfrogsystems.com.au/product-warranty>

6m / 20' Pole



9.5m / 31' Pole Option

