



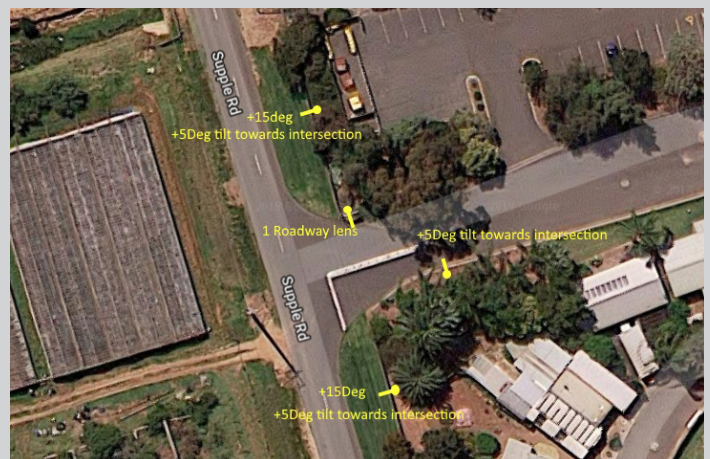
Palms Residential Village | Waterloo Corner, SA Roadway Entrance Illumination using Solar Street Lighting

BACKGROUND

The City of Playford Council approached Green Frog Systems to design a solar light solution for The Palms Residential Village main road entrance. The village has over 250 homes and caters for people 50 years and over. The entrance did not have any main road lighting and was hazardous for people visiting or leaving the complex. To install new mains street lighting was going to be a very expensive exercise for the council, and adjacent to the intersection were high voltage power lines.

OUR SOLUTION

After an analysis undertaken by Green Frog Systems engineers, our best solution was to install four GFS-200 30W LED Solar Street Lights on the park side. A lux simulation was conducted to identify the best location for the lights to be installed. Solar lighting has no ongoing operating costs making it a win for the council and the residents as well as increasing the visibility of the village from the road for deliveries, visitors and emergency vehicles.



RESULTS

Following installation and inspection, the council was very impressed with the outcome, deciding to continue working with Green Frog Systems and implementing Green Frog Systems solar lighting systems throughout numerous other areas within the Playford Council district including the Playford bowlis development.